

Building Study: **Harris Academy**

Architect: **John McAslan & Partners**; Location: **South Norwood, London**

1 Carpet tiles by Domo

Millennium tiles by Belgian supplier Domo are made from tufted dyed polyamid on a reinforced backing. The tiles are multiply tested to meet European standards on fire resistance, light-fastness, and colourfastness. The tiles measure 50cm x 50cm, are available in 24 colours and supplied in boxes of 10.

www.domocontract.be

2 Concrete panels by Trent Concrete

The panels add thermal mass to reduce mechanical cooling, and have been treated with an anti-graffiti coating at lower level. Size and shape can be specified by the architect, and the final surface can be patterned or polished. The panels can be cast with cleats or sockets to interface with any framing system.

www.trentconcrete.co.uk

3 Ceiling tiles by SAS International

Perforations in the tiles allow sound to be absorbed by acoustic pads. This concealed grid system is used mainly in classrooms and other mechanically ventilated areas, with the ideal open area being between 15% and 22%. A range of perforation patterns is available.

www.sasint.co.uk

4 Luminaires by Zumtobel

Diecast aluminium Copa D reflector luminaires were installed in the main entrance, to supplement natural light in the atriums and in the dining area. The model is suited to foyers and corridors with a ceiling height of 3m-4m. It is available with a closed aluminium reflector, or with a partly translucent plastic reflector for decorative effects.

www.zumtobel.com

5 ETFE rooflights by Vector Foiltec

The rooflights are formed from a triple-layered cushion of ETFE. The system admits high levels of natural daylight, while a fritted pattern on the surface helps to reduce solar gain. The steelwork support structure was designed by

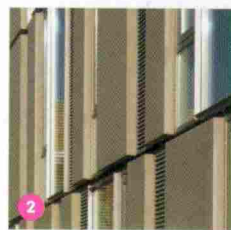
McAslan's and Vector Foiltec to align with the cladding panels.

www.vector-foiltec.com

6 Acoustic panels by Decoustic

Decoustics supplied more than 1,700sq m of Solo acoustic panels in a number of paint colours for the main entrance area and the walls of the classroom blocks. The panels reduce reverberation and comply with BB93 on acoustic design for schools.

www.decoustics.com



Building Study: **Heart of England School**

Architect: **Eldridge Smerin**; Location: **Solihull**

1 Furniture supplied by Places and Spaces

The south London firm sources contemporary pieces for contract and domestic clients. "A lot of schools just go to school-based catalogues, but there's so much out there that still fits school criteria," says managing director Laura Slack, suggesting ranges by Movisi (left), BD Design and Zanotta.

www.placesandspaces.com



2 Specialist joinery by Jumbo Group

The firm works to architects' specifications or client images using many different timbers. These include Swedish and Finnish softwood, mahogany, maple, Parana pine, English and European oak. It specialises in windows, doors and stairs.

www.jumbogroup.co.uk

3 Luminaire by Thorn

The Planor Suspended luminaire, which uses compact T5 fluorescent tubes, was specified to give diffused up- and down-light in the study bridge. A wall-mounted version was also specified. The slimline luminaire was approved for schools use by Solihull Council.

www.thornlight.com



MORE ON PRODUCTS

bdonline.co.uk/productgallery